



KDCMA

KDCMA Double Clipper

Area of application

The KDCMA range is a newly designed range of fully automatic modular models. The range of basic and accessory components of these clipping machines made completely out of stainless steel is interchangeable. Every model can therefore be easily optimized for the required application. Natural, artificial and fibrous casings in a caliber range of 25–120 mm are processed as raw, cooked or scalded sausages to make portions, rings, strings and slicing sausages, which are discharged either into a collecting pan or onto various roller conveyors. The movable, adjustable casing brake prevents overloading the casing and ensures exact filling of the portions. Operation via a touch screen control leaves nothing to be desired in terms of convenience and efficiency. If very simple operation is required, the trade setting (touch screen display with few controls) is set accordingly. For maximum accessibility when operating and cleaning the machines, they can be swivelled and have covers which can be opened wide. Thanks to the 10 degree slope, it is easy to see the working area. Stainless steel components with sloping surfaces and a new design with freely suspended lock plates meet maximum hygiene requirements.

Technology

Thanks to the use of single-action cylinders in the clip closure area, the machine is faster and has significantly lower air consumption. This saves money! Four displacer plates ensure clean sausage tails in various casings, even in large calibers. Simple, robust technology.

Control

The KDCMA is operated via a touch screen control system with 50 stored programs easily accessible. Internationally recognized icons leave nothing to be desired in terms of convenience, hygiene and efficiency. The user interface comprises the functions stop counter, portions per minute, system setting menu, machine switch menu, fault report, product setting menu fault position, loop test, label test, and display of stuffer start.



Easy to clean thanks to smooth surfaces.



The KDCMA is operated via a touch screen.

KDCMA Double Clipper

Easy service

The KDCMA clipping machine offers maximum maintenance and service-friendliness. The valves are installed on a service-friendly, “easy to change” pull-out bar. Quick and easy replacement of defective valves means short down-times and increased efficiency. Open design in filler and closing area makes access to the work area an outstanding feature. Thanks to the well thought out design, service work can be carried out quickly and easily, which guarantees long work cycles and low repair costs. All valves are identical on the KDCMA. This means low stock level requirements. The functions of the valves can be checked via the control (step mode).

Design

The open design of the KDCMA is very service-friendly, as all necessary service areas are easily accessible. The consistent design is adapted to ensure high product quality, productivity and hygiene. Its robust design guarantees maximum stability and a long service life.

Options / accessories

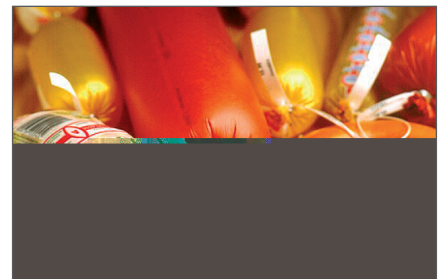
- Support plate for ring-shaped products
- Outlet roller conveyor for bar-shaped products
- Label feeder with printer for labelling the product
- Spool clip system – to reduce reloading times for clips
- String dispenser – for producing ring-shaped products
- Visual length stop (variable) – to reduce cut-off residue when slicing
- Automatic loop feeder – products can be suspended for the process or for presentation
- Electronic counter – daily reproducible settings are possible

Advantages

- Modular construction for adaptation to customer requirements
- Hygienic design: inclined and smooth surfaces, easy cleaning thanks to good accessibility
- Ergonomic inclination of the machine for improved handling and view of the production area
- Comprehensive range of accessories
- Single-action cylinders with low air consumption
- Robust design



Service-friendly: knife replacement without tools



Sausages with labels



Ring sausages



Chub sausages

Technical specifications

Model	KDCMA70	KDCMA90	KDCMA200	KDCMA400
Caliber	25–65 mm	25–85 mm	45–110 mm	45–120 mm
Clip range	E200, E210, E220, E230, E240		G175, G200, G225	370, 390, 400
Air consumption	7.4 NI	9.5 NI	12.3 NI	16.6 NI
* Depending on material				

Model	KDCMA 70	KDCMA 90	KDCMA 200	KDCMA 400
Support plate	○	○	○	○
Outlet roller conveyor	○	○	○	○
Label insertion device with printer or embosser	○	○	○	○
Spool clip system	○	○	○	○
String dispenser	○	○	○	○
Visual length stop (variable)	○	○	○	○
Automatic loop feeder	○	○	○	○
Electronic counter	X	X	X	X
LpA [dB(A)]	82	82	84	79
LWA [dB(A)]	94	94	98	–
X standard ○ extra ● not possible Sound pressure level as per EN ISO 11204				

TIPPER TIE INC.
2000 Lufkin Road
Apex, NC 27539 USA
Tel. +1 919 362 8811
Fax +1 919 362 4839
infoUS@tippertie.com

TIPPER TIE TECHNOPACK GmbH
Otto-Hahn-Strasse 5
21509 Glinde/Germany
Tel. +49 40 72 77 04 0
Fax +49 40 72 77 04 100
infoDE@tippertie.com

TIPPER TIE ALPINA GmbH
Waldau 1
9230 Flawil/Switzerland
Tel. +41 71 388 63 63
Fax +41 71 388 63 00
infoCH@tippertie.com

TIPPER TIETM
SOLUTIONS THAT WORK. A DOVER COMPANY